



ALL MARINE  
— CHARTERS —

RESEARCH CHARTERS - MOTHER SHIPPING - PRIVATE CHARTERS - MEDIA CHARTERS

---

# MV Miss Rankin



☎ +61 405071775 or +61 406683727

✉ [info@allmarinecharters.com.au](mailto:info@allmarinecharters.com.au)

🌐 [www.allmarinecharters.com.au](http://www.allmarinecharters.com.au)

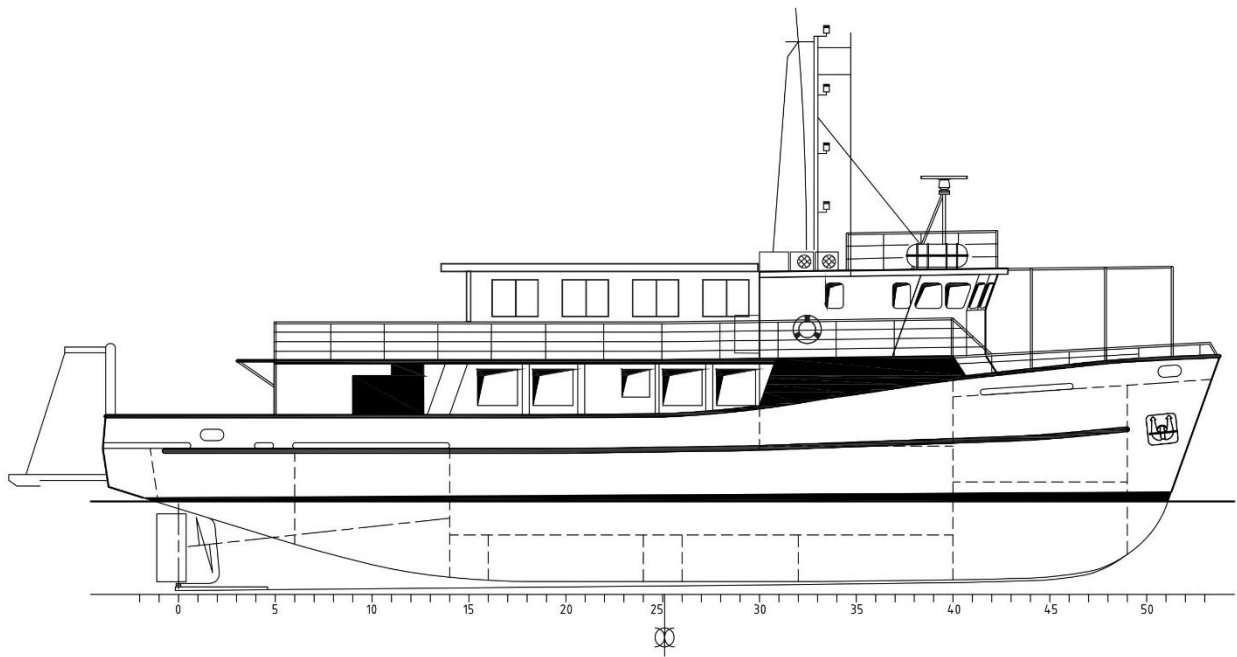
📍 Cairns, Queensland, Australia



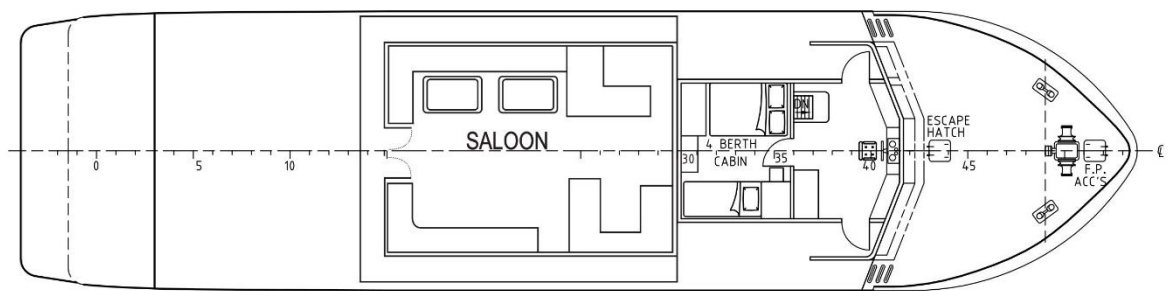
MV Miss Rankin is a 29 metre, twin screw vessel in 2B AMSA survey. She is suited to both long and short-term commercial and private charters. She has a large back deck with easy entry/exit stairs, a 2-tonne boom crane, a dive compressor, and a 4000 nautical mile range. Miss Rankin accommodates 12 guests in 8 twin-berth cabins, 4 with private ensuites and 4 sharing 2 bathrooms. Extensive refit completed in 2024.



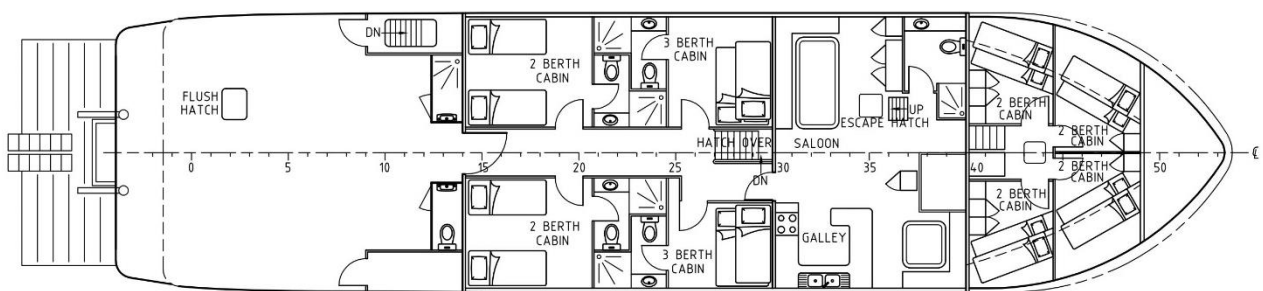
<b>Registered Length</b>	29m
<b>Beam</b>	7.3m
<b>Draft</b>	2.4m
<b>Gross Tonnage</b>	220t
<b>Cruising speed</b>	8-9 knots
<b>Port of Registry</b>	Cairns
<b>Accommodation</b>	Surveyed to carry 12 guests and 6 crew. All twin cabins are air-conditioned with ample storage space.
<b>Guest Cabins: Main Deck</b>	4 Cabins with private ensuites. 2 cabins with twin beds. 2 cabins with a double bed and single bunk above. Large windows with blinds.
<b>Guest Cabins: Lower Deck</b>	4 Cabins with twin bunk beds. Sharing 2 adjacent bathrooms.
<b>Air-Conditioning</b>	Fully air-conditioned.
<b>Dining areas</b>	Large air-conditioned enclosed saloon with 2 tables, large windows and a bar area. Outdoor undercover for al-fresco dining.
<b>Electrical Equipment</b>	Smart TV, for recreational viewing or for presentations/seminars
<b>Communications</b>	Starlink hi-speed internet
<b>Main Engines</b>	2 x 3406 – 365hp Caterpillar Twin Screw
<b>Generators</b>	1 x 40 kva Isuzu 240 + 1 x 30 kva Mitsubishi, 415 v 50hz
<b>Fire Fighting &amp; Safety</b>	Vessel fitted to AMSA 1B survey standard. EPIRB. Life Buoys x 5 Solas + Life Jackets x 22 Solas. Life Rafts 2 x 12 man. Pyrotechnics and firefighting to survey requirements + portable fire extinguishers + 2 x fire hydrants and hoses. CO2 fire suppression in engine room.
<b>Plotter Software</b>	Cplot Nav Programme
<b>Radios</b>	1 x HF + 1 x VHF + 3 handheld ICOM IC-M3 3
<b>Compass</b>	Tokyo Keiki
<b>GPS</b>	Furuno
<b>Depth Sounder</b>	Furuno (good to 600m)
<b>Autopilot</b>	Furuno
<b>Fuel</b>	38,000L
<b>Water</b>	32,000L + Desalinator 180L/hr
<b>Deck Machinery</b>	2t Palfinger knuckle boom crane
<b>Deck Space</b>	Aft deck working space is 9m x 7.3m with 1.2m x 5.3m duckboard.
<b>HP Compressor</b>	11 CFM Nuvair dive compressor
<b>Tender</b>	1 x 4m Polycraft with 40hp outboard



PROFILE

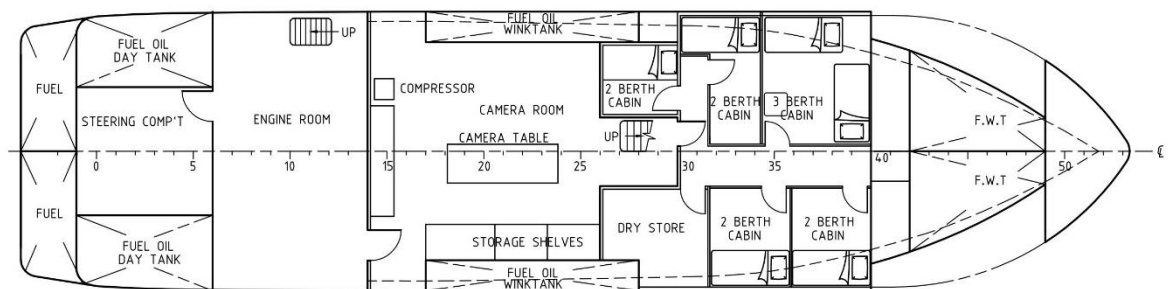


UPPER DECK



MAIN DECK

2 BERTH CABIN



UNDER DECK